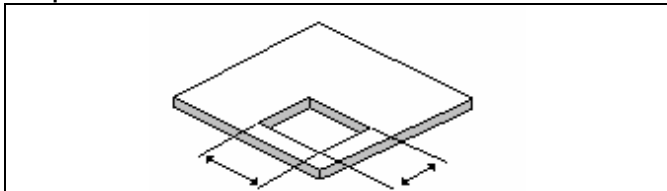


PMC47- Raised access floor boxes

INSTALLATION INSTRUCTIONS

IMPORTANT: Please read carefully the following instructions before beginning. In case of any doubt do not hesitate to contact us.

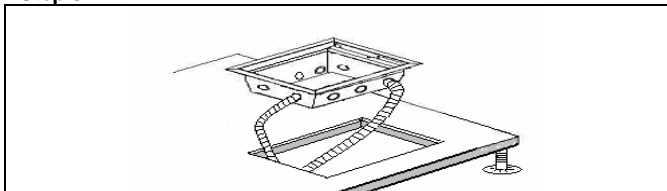
Step 1



Installation of floor boxes can start once floor covering has been laid.

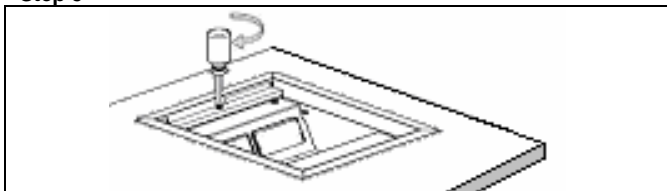
Determine floor box location on raised floor panel and cut an opening according to the following dimensions: 10 1/4" x 8 1/4" (260 mm x 209 mm)

Step 3



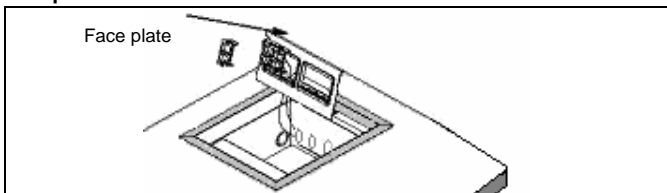
Extend flexible conduit (1/2" or 3/4") through panel cut out. Attach a conduit connector to conduit. Remove appropriate knockout from box and attach conduit connector

Step 5



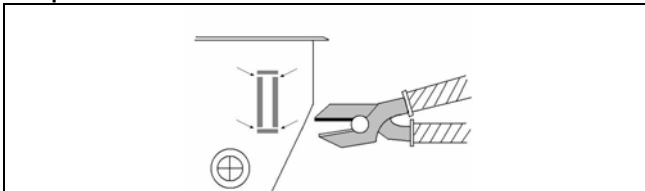
Insert box to mounting hole and adjust toggles to the panel by tightening locking screws.

Step 7



Place faceplates into box. When placing a combination of power and low voltage devices on one side, services dividers should be installed. (Service dividers are provided – Devices not provided)

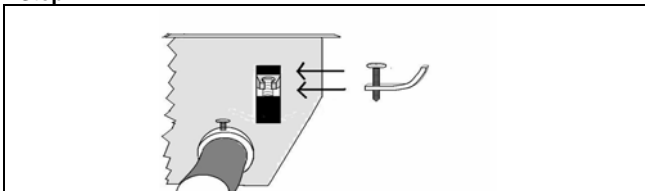
Step 2



Remove lid from floor box to increase installer's flexibility. Open lid and pull left side until released from frame.

Using a sheet metal cutter, cut and remove pre-cut steel in order to install tighten screws and toggles (in step 4).

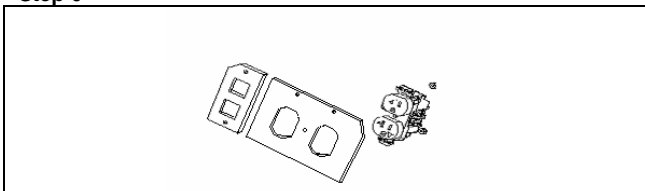
Step 4



Push locking toggle and screw into each screw opening (located at all four corners) until toggle snaps into place.

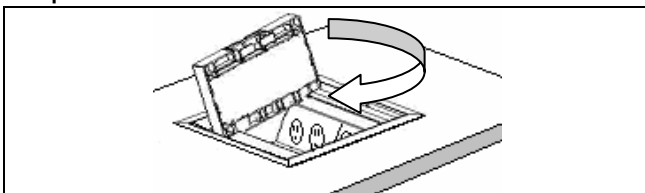
Toggle should be pressed (pivot) towards the box prior to installing box into the raised floor panel.

Step 6



Wire the devices in accordance with the National Electrical Code. Attach power outlets and data devices to the corresponding mounting plates.

Step 8



Apply lid according to the following instructions:

- Place nock at right side into corresponding hole in frame/trim.
- Push left side of lid until left side nock reaches end position.