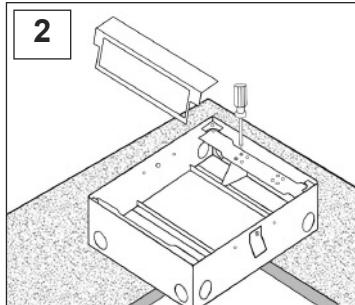


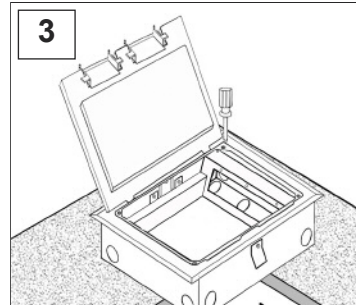
1

Determine box location and position in accordance to floor plan.



2

Remove the mounting panel to access the wiring compartment. Install barriers to isolate compartments - if necessary -

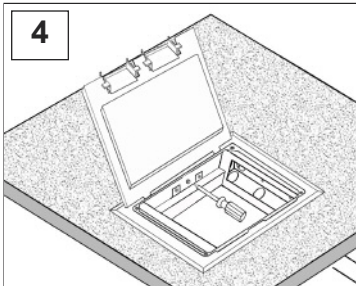


3

Attach the cover to the box using the four supplied screws. Attach conduits to the selected knock outs.

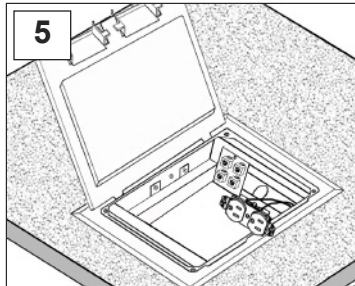
Warning:
 To be installed and/or used in accordance with appropriate electrical codes and regulations.

Warning:
 To avoid fire, electrical shock and/or electrocution turn power OFF at the circuit breaker before wiring.



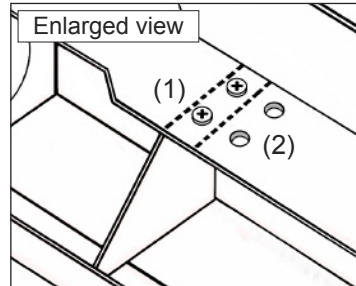
4

Drop the box on the floor cut out. Locate the clips tighten screws and fasten them until the box is properly secured to the floor (See Fig A and B below)



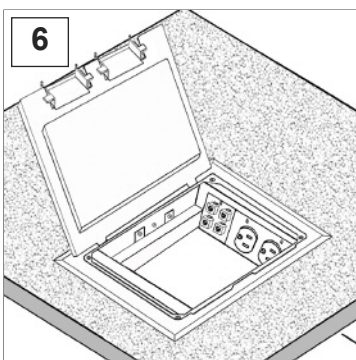
5

Barriers must be installed when placing line and low voltage devices on the same side of the box.



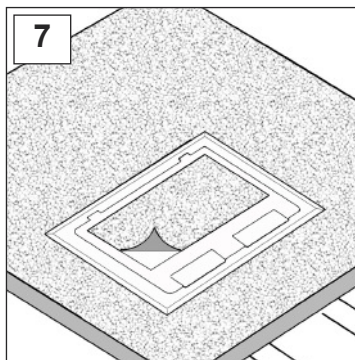
Position and install the barrier based on the selected faceplates:
 (1) Apply to faceplates 23601 and 23612
 (2) Apply to faceplates 44607 and 24633

Caution:
 Wire devices in accordance with the NEC. If you are not sure about existing conductor wires, color coding, polarity and circuit feed contact a licensed electrician.



6

Attach the faceplates to the mounting panels.



7

Install the desired floor covering material (Carpet, Wood, etc) on top of the lid -if applicable- Recessed area: 7/16" (12 mm)

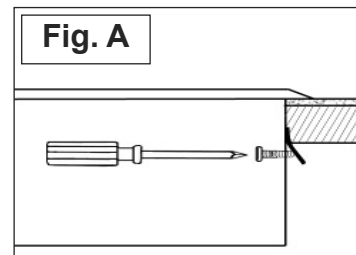


Fig. A

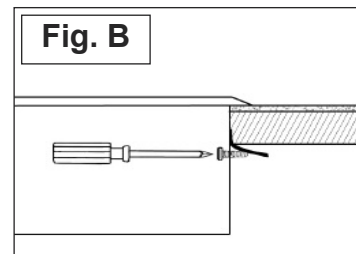


Fig. B

DISCLAIMER - (Worldwide) FBS FLOOR BOX SYSTEMS MAKE NO WARRANTIES OR REPRESENTATIONS, WHATSOEVER, EXPRESS OR IMPLIED, AS TO THE MERCHANTABILITY, FITNESS OR SUITABILITY OF THIS PRODUCT.

Installer/Buyer of this product must verify the suitability or approval of this product for the specific use with the local codes and/or authorities having jurisdiction in the area where the product will be installed.

